

The MDS Industries High Security Shutter range provides a high level of security for the openings of any premises. They are manufactured fully in compliance with BS/EN 13241 "Industrial, commercial and garage doors and gates" and receive the appropriate LPS 1175 security accreditation according to the degree of protection that is required. Each of our shutters is designed to protect you against one of the following:



SR1: Opportunist attack by bodily force using minimal tools (e.g. screwdriver, knife, pliers, etc)

SR2: More determined opportunist attack with tools of a higher mechanical advantage (e.g. SR1 tools plus bolt cutters, claw hammer, drill, etc).

SR3: Deliberate forced entry of protected premises using bodily force and a selection of attack options (e.g. SR2 tools plus short axe, chisels, crowbar, gas torch, etc).

SR4: Experience attempts at forced entry with higher tool levels (e.g. SR3 tools plus felling axe, sledgehammer, steel wedges, disc grinder, jigsaw, etc).



Dimensions: Opening height is up to 8,000mm; opening width up to 8,000mm and the shutter weight is approximately 35kg/m².

Curtain: The curtain material is generally constructed from individual inter-locking pre-galvanized steel lath (generally 75mm concave) incorporating either a plastic endlock or a zinc alloy die cast end-lock riveted in position. Wind anchor locks may be fitted on larger shutters. The lath can be 18, 20 or 22 swg as standard or any other gauge if requested.

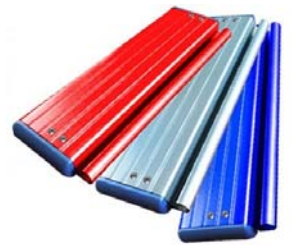
Bottom Rail: The base of the curtain is fitted with a steel angle reinforcing rail size forming an inverted 'T' with mounting angles for fixing to the support structure.

Operation: The shutter is either powered by a 240v single phase tube motor or by a 400v 3 phase motor. This will depend upon the size and the frequency of use of the shutter. For either option adjustable limit switches are incorporated to stop the roller shutter at each end of travel.

Activation is with low voltage rocker switch, key switch control or optional remote control. A group control unit for up to six shutters simultaneously is an optional extra.



Powder Coated Finishes: As an optional extra powder coated finishes can be provided to the shutter in standard RAL or BS standard colours as well as non-standard colours if samples are provided for us to analyse. Plastisol finishes are also available.



Safety Systems: Safety brakes are fitted as standard in accordance with BS/EN 13241-1:2003. A safety bottom edge and safety photo beam cells can be fitted as optional extras.

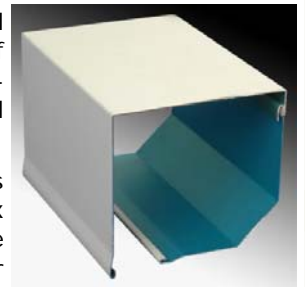
Extra Security: Ground locks with interlock and bullet locks with safety cut-out device can be fitted as an optional extra.



Roller Assembly: Constructed from mild steel tube of sufficient gauge to prevent deflection, mounted on bright steel shafts running in ball races.

Endplates: The roller assembly is supported by mild steel endplates with mounting angles for fixing to the support structure.

Roller Enclosure (Hood): Formed from galvanized pressed sheet metal to enclose the rear of the shutter barrel and curtain assembly. Available as an optional extra.



Side guides: Constructed as 90mm x 34mm or 120mm x 34mm extruded aluminium guide with integral box section for strength.

Warranty: We warranty all parts free from manufacturer's defects for a period of twelve months from the commissioning date. The warranty also covers call out charges and fitting charges for replacement parts supplied under the warranty. The warranty does not cover repairs due to accidental damage or misuse, fair wear and tear or any loss of use while replacement parts are being supplied or fitted.



MDS Industries Limited
25 Britannia Square, Worcester, WR1 3DH, UK
T: +44 (1905)317878
W: www.rollershutterdoors.com
E: sales@rollershutterdoors.com



"Engineering is our expertise, doors are our daily obsession."